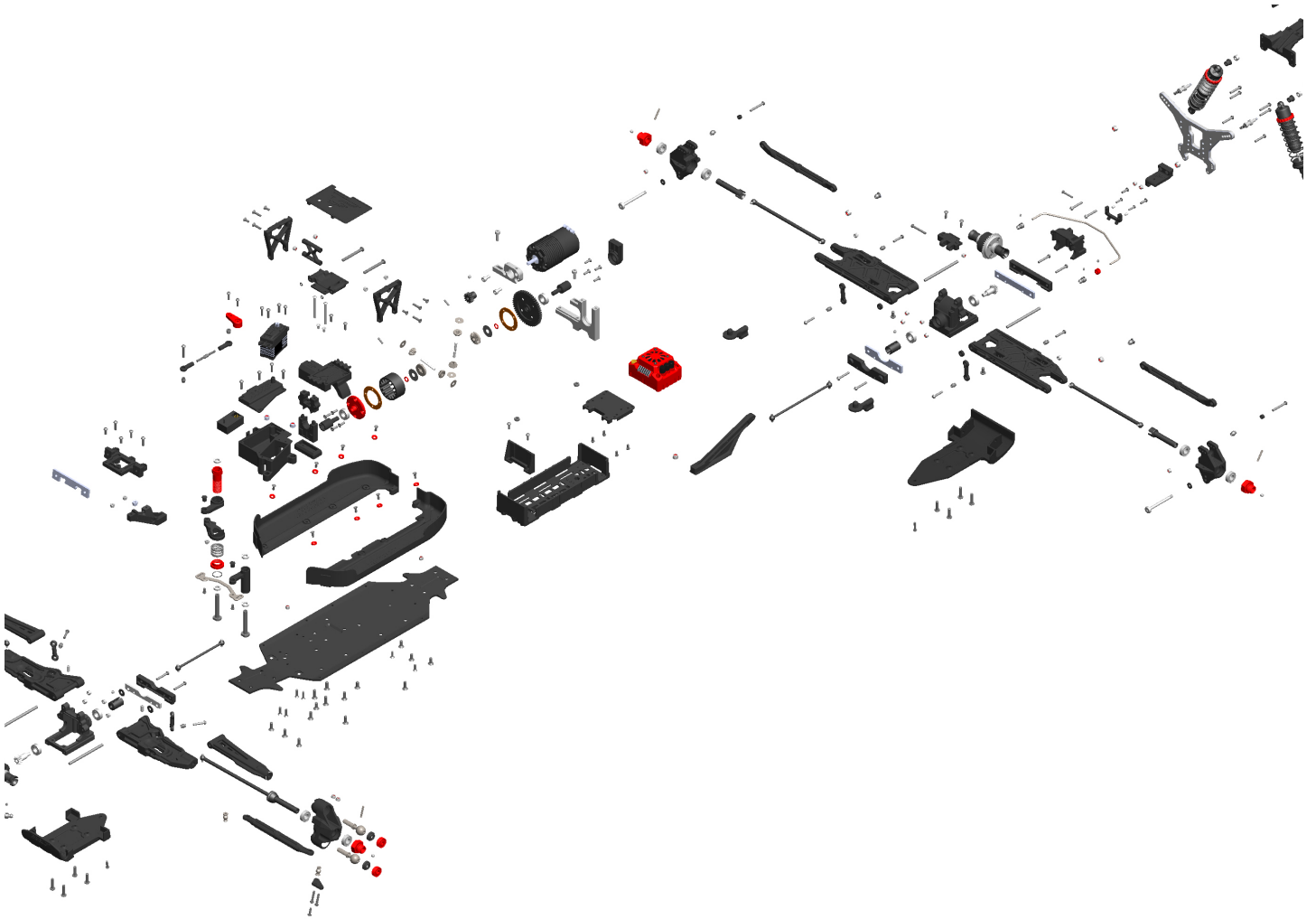




EXPLODED VIEWS

VUES ÉCLATÉES • EXPLOSIONSZEICHNUNGEN
• UITGEBREIDE ZICHTEN



JAMBO™ **XP**
6s

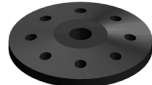
DEMENTOR™ **XP**
6s

Version: 07-05-2021

www.corally.com

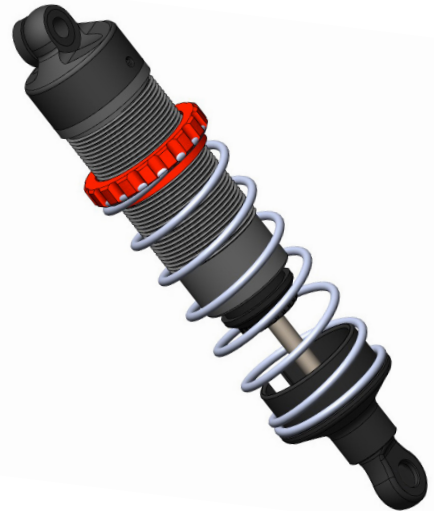
- Do not overtighten the Shock Cap to prevent deformation of the silicone Shock Bladder.
- Ne serrez pas trop le capuchon de l'amortisseur pour éviter la déformation de la membrane en silicone.
- Ziehen Sie die Dämpferabdeckung nicht zu fest an, um eine Verformung der Silikonmembran zu vermeiden.
- Draai de schokkap niet te strak aan om vervorming van het siliconenmembraan te voorkomen.

C-00180-080 Shock Piston

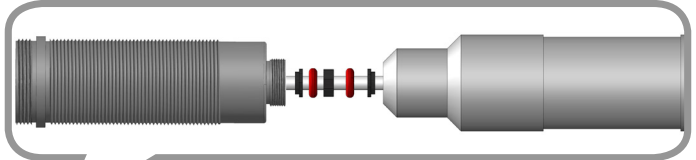


Set content (36PCS)

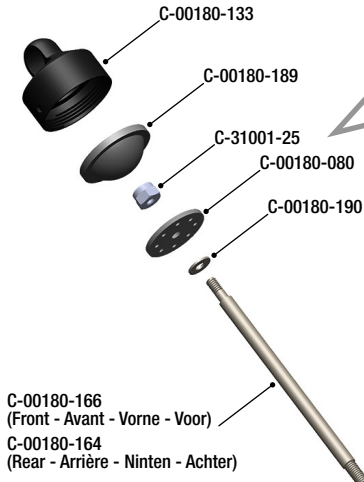
- Shock Piston - **4x1.6**
- Shock Piston - **4x1.8**
- Shock Piston - **5x1.4**
- Shock Piston - **5x1.5**
- Shock Piston - **5x1.6**
- Shock Piston - **6x1.4**
- Shock Piston - **6x1.3**
- Shock Piston - **8x1.2**
- Shock Piston - **8x1.3**



Place all small parts on a screwdriver (Ø3mm) and push them into the shock body. All parts will be properly aligned.



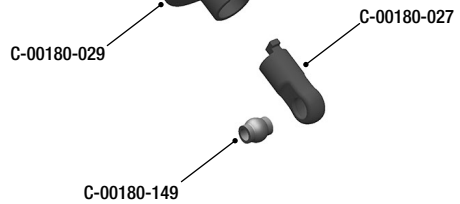
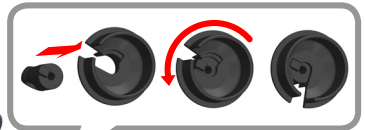
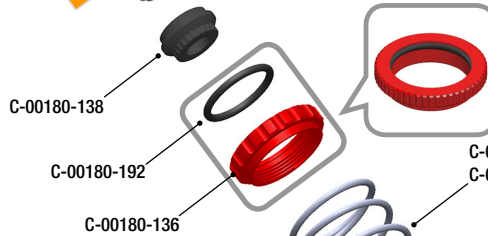
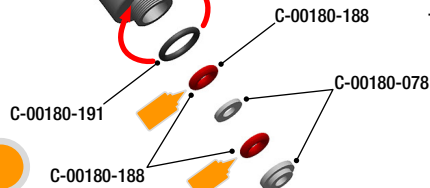
- Placez toutes les petites pièces sur un tournevis (Ø3mm) et poussez-les dans le corps de l'amortisseur. Toutes les pièces seront correctement alignées.
- Setzen Sie alle Kleinteile auf einen Schraubendreher (Ø3mm) und drücken Sie sie in den Dämpferkörper. Alle Teile werden richtig ausgerichtet.
- Plaats alle kleine onderdelen op een schroevendraaier (Ø3mm) en duw ze in de behuizing van de schokdemper. Alle onderdelen zullen goed uitgelijnd zijn.



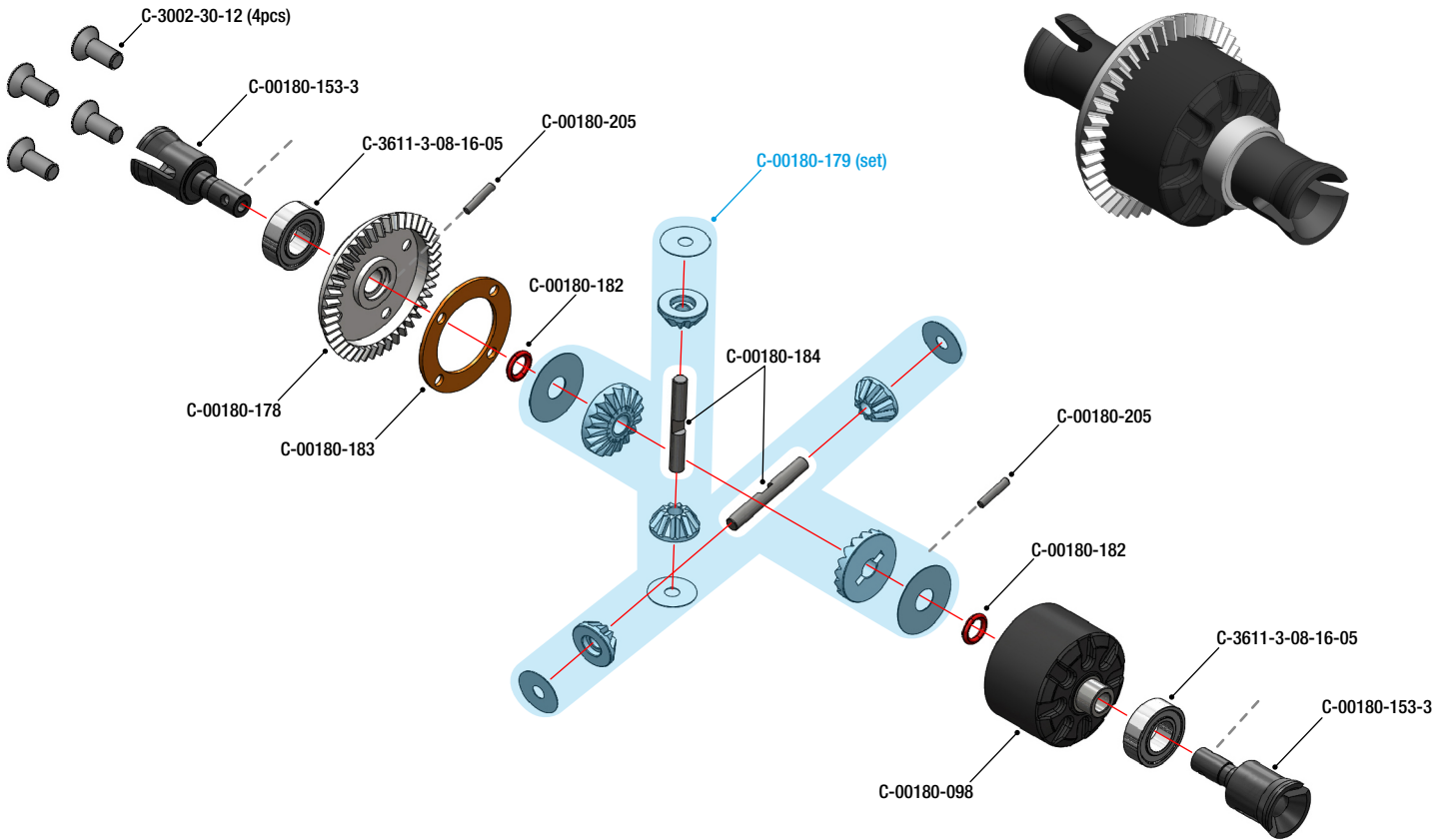
C-00180-166
(Front - Avant - Vorne - Voor)
C-00180-164
(Rear - Arrière - Ninten - Achter)

C-00180-137
(Front - Avant - Vorne - Voor)
C-00180-134
(Rear - Arrière - Ninten - Achter)

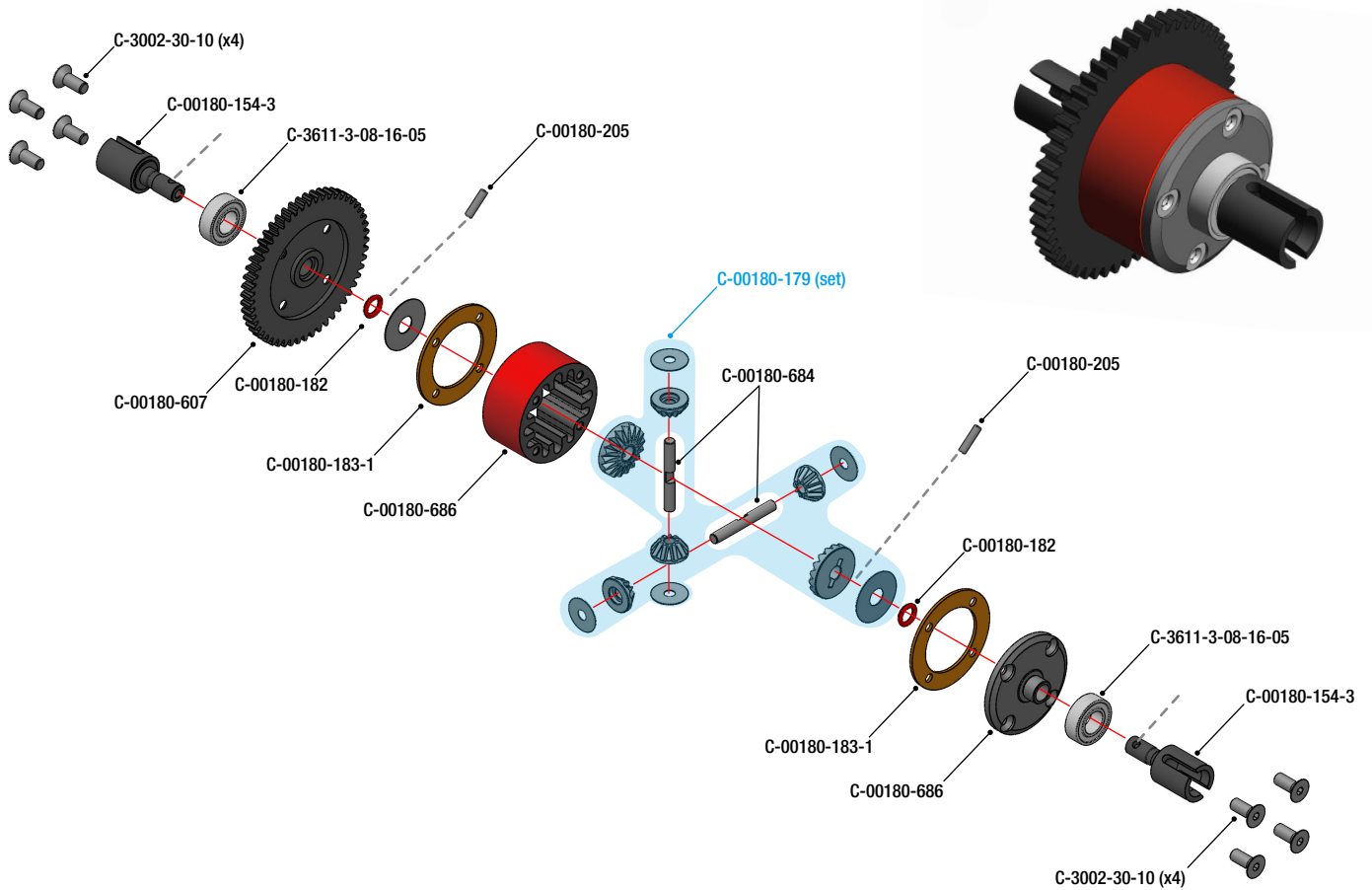
APPLY SILICONE OIL
- Appliquez de l'huile silicone
- Silikonöl auftragen
- Breng siliconenolie aan

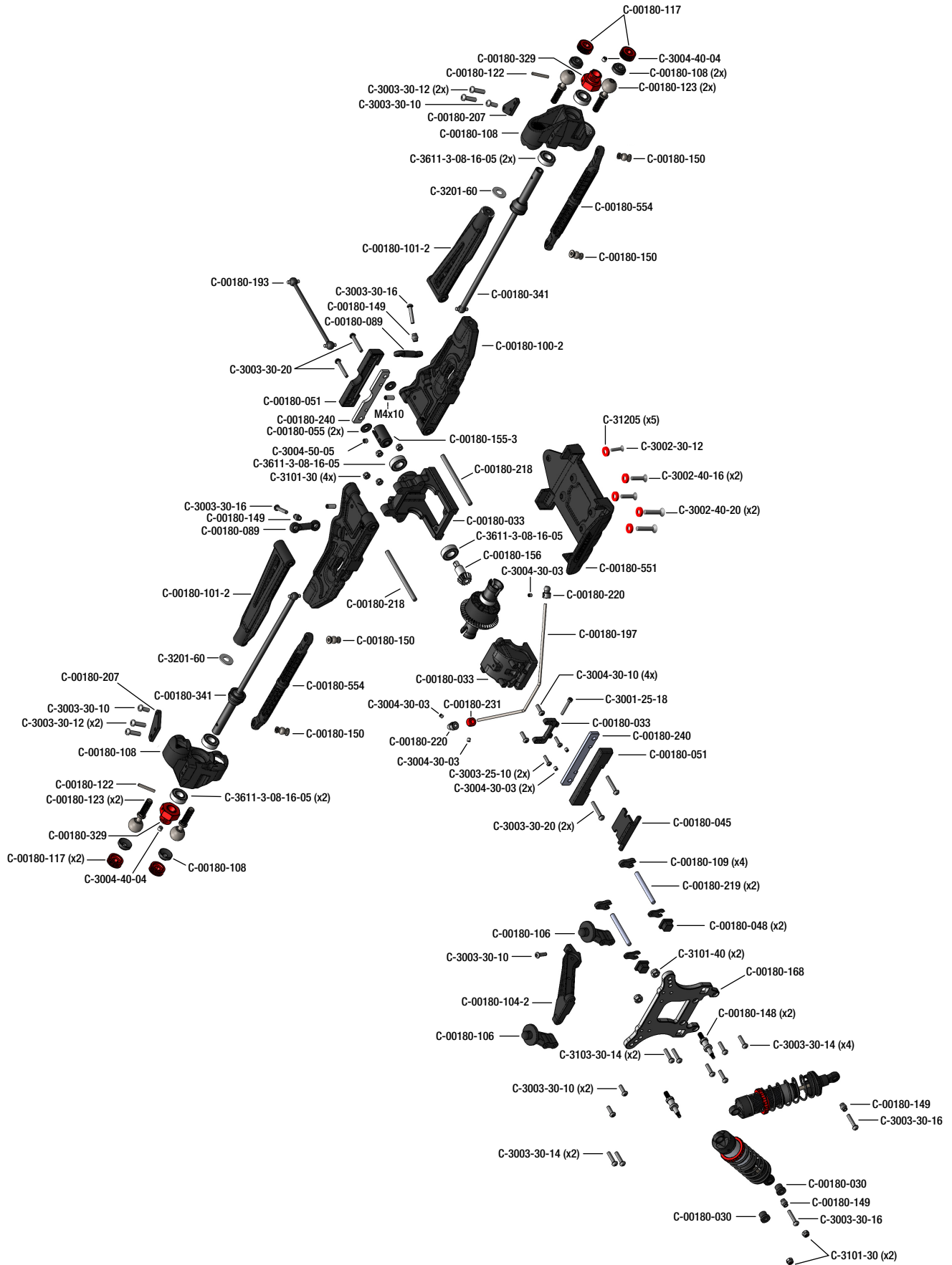


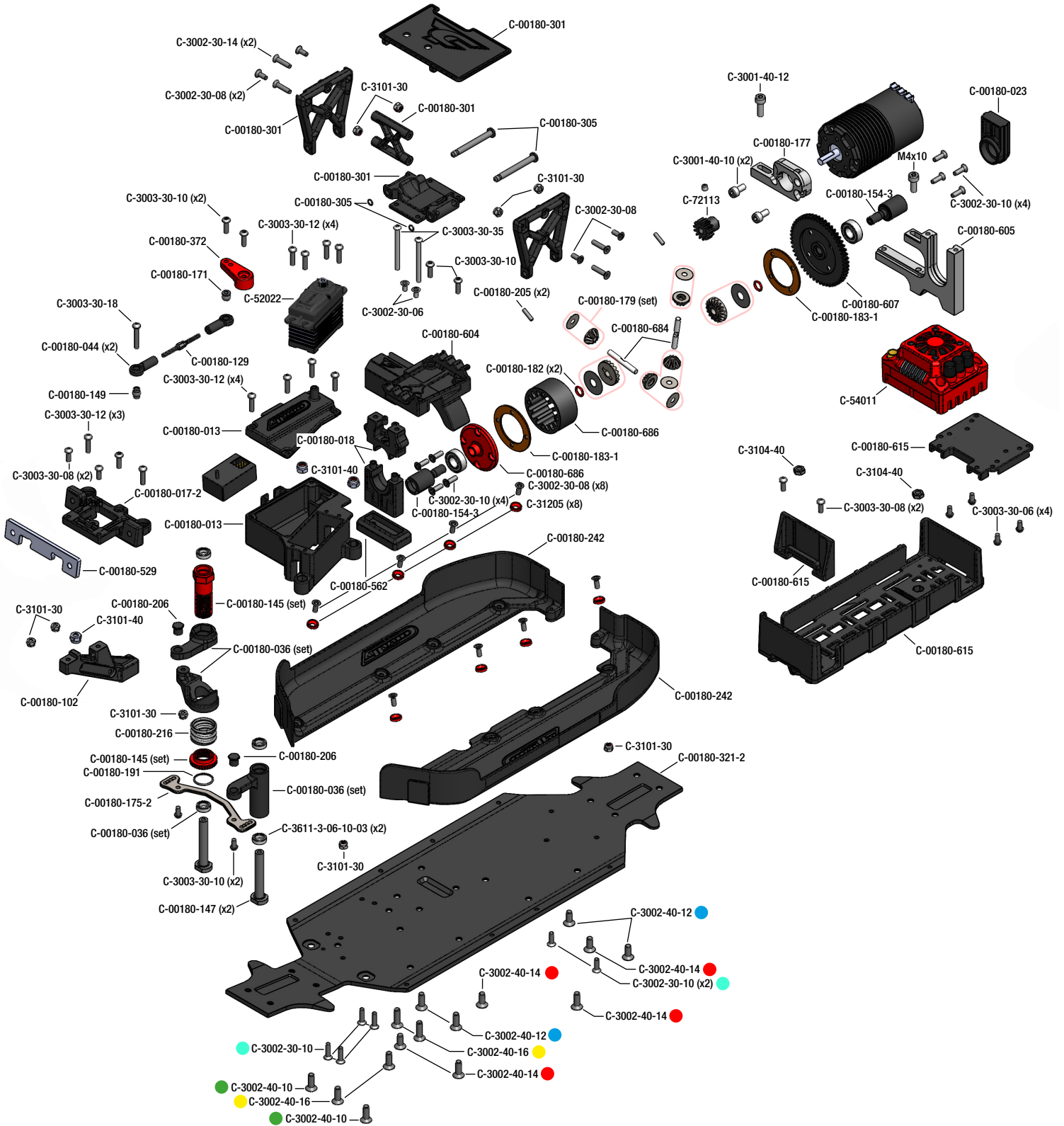
FRONT & REAR DIFFERENTIAL - DIFFÉRENTIEL AVANT ET ARRIÈRE - DIFFERENTIAL VORNE UND HINTEN - VOOR & ACHTER DIFFERENTIEEL



CENTRE DIFFERENTIAL - DIFFÉRENTIEL CENTRAL - ZENTRALDIFFERENTIAL - CENTERDIFFERENTIEEL







CHASSIS - SCREWS DESCRIPTION - DESCRIPTION DES VIS - BESCHREIBUNG DER SCHRAUBEN - BESCHRIJVING SCHROEVEN

- M3x10mm DIN7991
#C-3002-30-10
- M3x12mm DIN7991
#C-3002-30-12
- M4x10mm DIN7991
#C-3002-40-10
- M4x12mm DIN7991
#C-3002-40-12
- M4x14mm DIN7991
#C-3002-40-14
- M4x16mm DIN7991
#C-3002-40-16
- M4x20mm DIN7991
#C-3002-40-20

